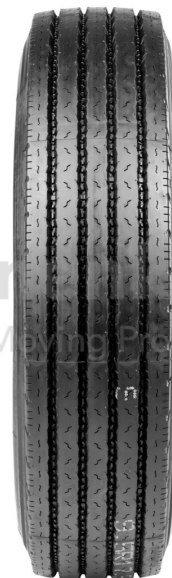


TYRES

Product group	Tyres
Item number	11366105
Valid tyre size	9.5 R 17.5
LI / SI / PR	143 / 141 J, 18 PR
TL/TT	TL
Brand	Linglong
Tread pattern	LLF26



Notes and features

- The Linglong LLF26 is a truck tyre for regional transport for front or trailer axles.
- The tyre is characterised by very good handling.
- Its low rolling resistance enables low fuel consumption.

Technical Informations

Item number	11366105
EAN	8859291424086
Valid tyre size	9.5 R 17.5
LI / SI / PR	143 / 141 J, 18 PR
TL/TT	TL
Brand	Linglong
Tread pattern	LLF26
M+S	M+S
3PMSF	3PMSF
Axle position truck	FA/TR
Rolling resistance	E
Wet grip	B
Rolling noise [db].	73
Rolling noise level	B
Antistatic	No
Tyre colour	Black
ECE regulation number	ECE 54,ECE 117
Nettogewicht [kg] (gültig)	33,34
Recommended rim size	6.75
Permitted rim size	6.00
Maximum air pressure [bar].	8,75
Section width (mm)	240
Outer diameter of tyre [mm].	842
Stat. radius (SLR) [mm]	391
Rolling circumference [mm].	2551
Tread depth (mm)	12,0

E-Ready

No

Load capacity

Index	Load capacity [kg]	Speed [km/h]	Axle position	Inflation pressure [bar]	Load variant
143 J	2725	100	Single	8,75	
141 J	2575	100	Twin		