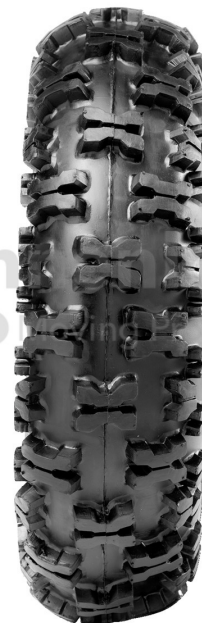


## TYRES

Product group	Tyres
Item number	12500249
Valid tyre size	16 x 6.50 - 8
LI / SI / PR	49 A4, 2 PR
TL/TT	TL
Brand	Carlisle
Tread pattern	Snow Hog



## Notes and features

- Distinctive X-shaped tread pattern for outstanding traction in the snow.
- Main use on snow blowers, can be used on additional equipment for high traction.

## Technical Informations

Item number	12500249
EAN	5999110803029
Valid tyre size	16 x 6.50 - 8
Alternative size 1	170/60-8
LI / SI / PR	49 A4, 2 PR
TL/TT	TL
Brand	Carlisle
Tread pattern	Snow Hog
Antistatic	No
Tyre colour	Black
ECE regulation number	ECE 106
Nettogewicht [kg] (gültig)	2,82
Recommended rim size	5.375
Maximum air pressure [bar].	0,95
Section width (mm)	157
Outer diameter of tyre [mm].	415
Stat. radius (SLR) [mm]	187
Rolling circumference [mm].	1249
Tread depth (mm)	11,1
E-Ready	No

## Load capacity

Index	Load capacity [kg]	Speed [km/h]	Axle position	Inflation pressure [bar]	Load variant
49 A4	185	20		0,95	